

Musiktradition im ländlichen Raum

BLKM 
BAYERISCHE LANDESKOORDINIERUNGSTELLE MUSIK

BLASMUSIK AUS DER OBERPFALZ

Arrangement von Alwin Heim

Schottisch aus Neumarkt

Direktion – Stimmen – Partitur

in Kooperation mit



Direktion in C

Schottisch aus Neumarkt

trad.

Bearb.: Alwin Heim

$\text{♩} = 108$

A

Holz *f*

Flügelhorn/
Trompete *f* *mf* Trp tacet

Tenorhorn/
Bariton *f* *mf* 2.x play

Posaunen/
Tuba *f* *mf*

Schlagzeug *f* *mf*

Holz *mf*

Flgh/Trp. *mf*

Ten./Bar. *mf*

Pos./Tb *mf*

Schlzg. *mf*

Holz *mf*

Flgh/Trp. *mf*

Ten./Bar. *mf*

Pos./Tb *mf*

Schlzg. *mf*

Holz

Flgh/Trp.

Ten./Bar.

Pos./Tb

Schlg.

3

D.S. + ABBCC

Holz

Flgh/Trp.

Ten./Bar.

Pos./Tb

Schlg.

1.

2.

Trp

Fine

Schottisch aus Neumarkt

trad.
Bearb.: Alwin Heim

$\text{♩} = 108$

1. Flöte in C *f* *mf*

2. Flöte in C *f* *mf*

Oboe in C *f* *mf*

Klarinette in Eb *f* *mf*

1. Klarinette in Bb *f* *mf*

2. Klarinette in Bb *f* *mf*

3. Klarinette in Bb *f* *mf*

Fagott in C *f* *mf*

1. Alt-Saxophon in Eb *f* *mf*

2. Alt-Saxophon in Eb *f* *mf*

1. Tenor-Saxophon in Bb *f* *mf* 2.x play

2. Tenor-Saxophon in Bb *f* *mf* 2.x play

Bariton-Saxophon in Eb *f* *mf*

1. Flügelhorn in Bb *f* *mf*

2. Flügelhorn in Bb *f* *mf*

1. Horn in F *f* *mf*

2. Horn in F *f* *mf*

Tenorhorn in Bb *f* *mf* 2.x play

Bariton in C *f* *mf* 2.x play

1. Tuba in C *f* *mf*

2. Tuba in C *f* *mf*

1. Trompete in Bb *f* *mf*

2. Trompete in Bb *f* *mf*

1. Posaune in C *f* *mf*

2. Posaune in C *f* *mf*

3. Posaune in C *f* *mf*

Schlagzeug *f* *mf*

§ A

1. Fl.

2. Fl.

Ob.

Kl. (Es)

1. Kl.

2. Kl.

3. Kl.

Fg.

1.A-Sax.

2.A-Sax.

1.T-Sax.

2.T-Sax.

B-Sax.

1. Flgh.

2. Flgh.

1. Hn.

2. Hn.

Ten.

Bar.

1. Tuba

2. Tuba

1. Trp.

2. Trp.

1. Pos.

2. Pos.

3. Pos.

Schlbg.

Partitur

This page of a musical score, titled "Partitur", contains 25 staves for various instruments. The instruments listed on the left are: 1. Fl. (Flute), 2. Fl. (Flute), Ob. (Oboe), Kl. (Es) (Clarinet in E-flat), 1. Kl. (Clarinet), 2. Kl. (Clarinet), 3. Kl. (Clarinet), Fg. (Bassoon), 1. A-Sax. (Alto Saxophone), 2. A-Sax. (Alto Saxophone), 1. T-Sax. (Tenor Saxophone), 2. T-Sax. (Tenor Saxophone), B-Sax. (Baritone Saxophone), 1. Flgh. (Flugelhorn), 2. Flgh. (Flugelhorn), 1. Hn. (Horn), 2. Hn. (Horn), Ten. (Trumpet), Bar. (Trombone), 1. Tuba, 2. Tuba, 1. Trp. (Trumpet), 2. Trp. (Trumpet), 1. Pos. (Percussion), 2. Pos. (Percussion), 3. Pos. (Percussion), and Schlg. (Cymbal). The score is written in a key signature of two flats (B-flat and E-flat) and a common time signature (C). It features a first ending (1.) and a second ending (2.) in the fourth and fifth measures of the page. The notation includes various rhythmic values, accidentals, and dynamic markings.

B

Partitur

This page contains the musical score for section B, featuring 24 staves for various instruments. The instruments listed on the left are: 1. Fl. (First Flute), 2. Fl. (Second Flute), Ob. (Oboe), Kl. (Es) (Clarinet in E-flat), 1. Kl. (First Clarinet), 2. Kl. (Second Clarinet), 3. Kl. (Third Clarinet), Fg. (Fagott/Bassoon), 1. A-Sax. (Alto Saxophone), 2. A-Sax. (Second Alto Saxophone), 1. T-Sax. (Tenor Saxophone), 2. T-Sax. (Second Tenor Saxophone), B-Sax. (Baritone Saxophone), 1. Flgh. (First Flute/Guitar), 2. Flgh. (Second Flute/Guitar), 1. Hn. (First Horn), 2. Hn. (Second Horn), Ten. (Tenor), Bar. (Baritone), 1. Tuba (First Tuba), 2. Tuba (Second Tuba), 1. Trp. (First Trumpet), 2. Trp. (Second Trumpet), 1. Pos. (First Trombone), 2. Pos. (Second Trombone), 3. Pos. (Third Trombone), and Schlzg. (Schlagzeug/Drum). The score is written in a key signature of two flats (B-flat major or D-flat minor) and includes dynamic markings such as *f* (forte) and *2.x play* (second play). The music is organized into measures, with first and second endings indicated by '1.' and '2.' at the end of the section.

C

1. Fl. *mf* 2.x play tr

2. Fl. *mf* 2.x play tr

Ob. *mf* 2.x play

Kl. (Es) *mf* 2.x play tr

1. Kl. *mf* 2.x play tr

2. Kl. *mf* 2.x play tr

3. Kl. *mf* 2.x play tr

Fg. *mf*

1. A-Sax. *mf*

2. A-Sax. *mf*

1. T-Sax. *mf*

2. T-Sax. *mf*

B-Sax. *mf*

1. Flgh. *mf*

2. Flgh. *mf*

1. Hn. *mf*

2. Hn. *mf*

Ten. *mf*

Bar. *mf*

1. Tuba *mf*

2. Tuba *mf*

1. Trp. *mf* 2.x play

2. Trp. *mf* 2.x play

1. Pos. *mf*

2. Pos. *mf*

3. Pos. *mf*

Schlbg. *mf* 1x cymb. tacet

1. Fl. 2. Fl. Ob. Kl. (Es) 1. Kl. 2. Kl. 3. Kl. Fg. 1. A-Sax. 2. A-Sax. 1. T-Sax. 2. T-Sax. B-Sax. 1. Flgh. 2. Flgh. 1. Hn. 2. Hn. Ten. Bar. 1. Tuba 2. Tuba 1. Trp. 2. Trp. 1. Pos. 2. Pos. 3. Pos. Schlzg.

1. 2. Fine

D.S. + ABCC

1. Flöte in C

Schottisch aus Neumarkt

trad.
Bearb.: Alwin Heim

$\text{♩} = 108$

f

A

mf

B

f

C

mf

D.S. + ABBCC

1. *2.*

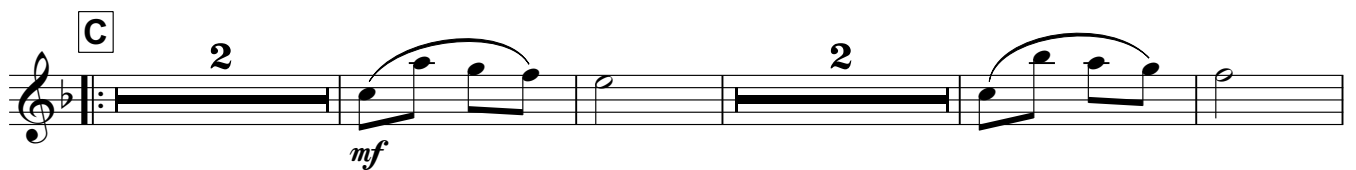
Fine

Schottisch aus Neumarkt

1. Alt-Saxophon in E \flat

trad.
Bearb.: Alwin Heim

$\text{♩} = 108$

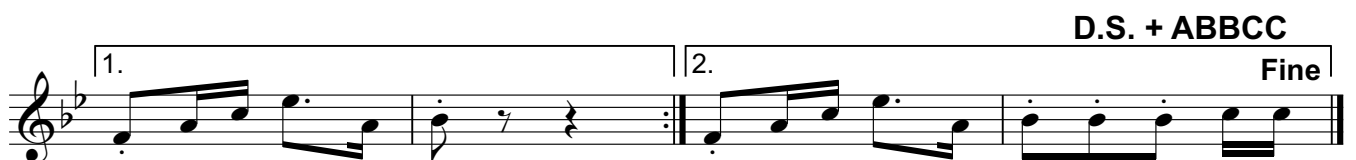


Schottisch aus Neumarkt

1. Flügelhorn in B \flat

trad.
Bearb.: Alwin Heim

$\text{♩} = 108$

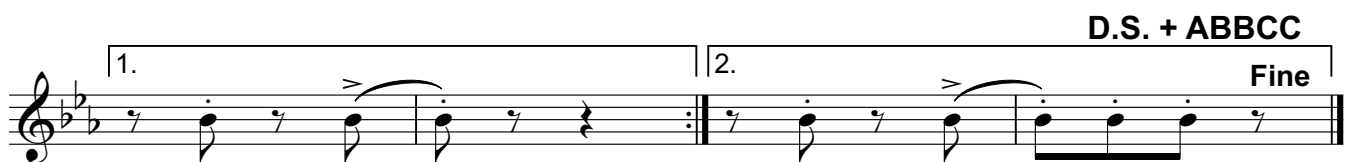


1. Horn in F

Schottisch aus Neumarkt

trad.
Bearb.: Alwin Heim

♩ = 108

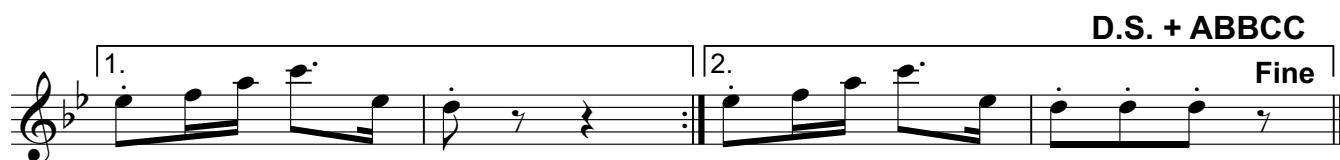
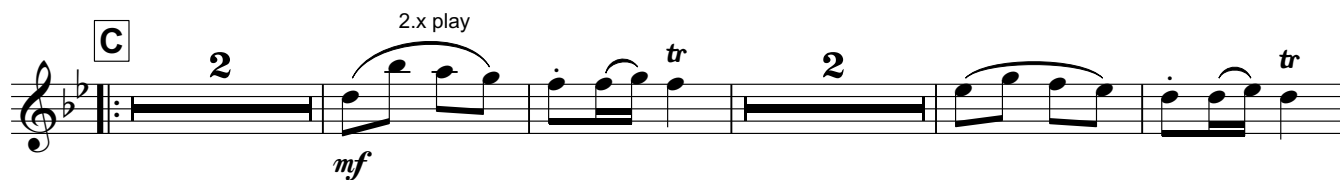
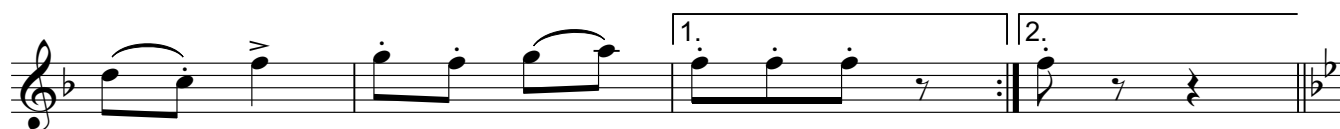


Schottisch aus Neumarkt

1. Klarinette in B \flat

trad.
Bearb.: Alwin Heim

$\text{♩} = 108$



Schottisch aus Neumarkt

1. Posaune in C

trad.
Bearb.: Alwin Heim

♩ = 108

f

A
mf

B
f

C
mf

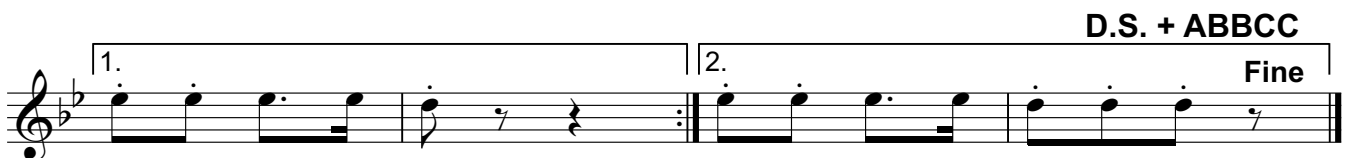
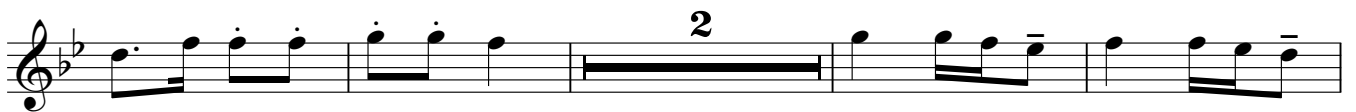
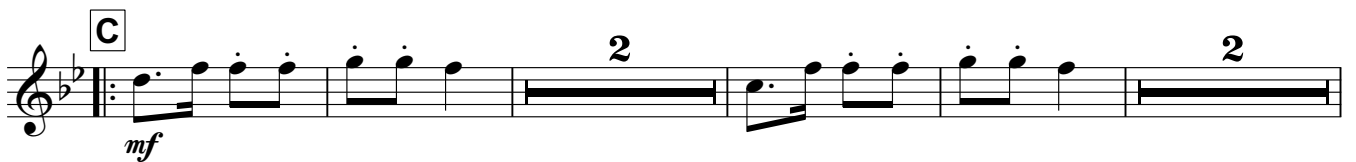
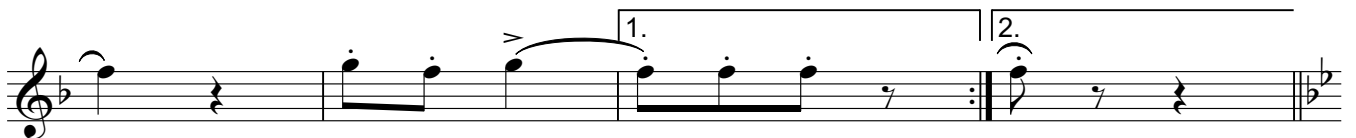
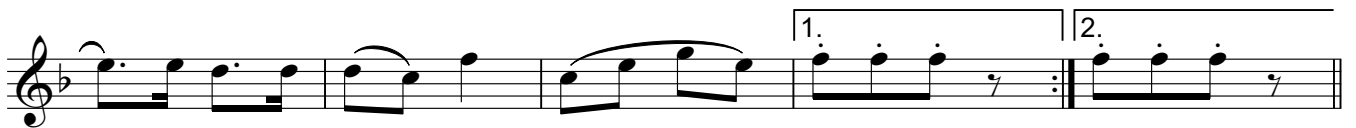
D.S. + ABBCC
mf
Fine

Schottisch aus Neumarkt

1. Tenor-Saxophon in B \flat

trad.
Bearb.: Alwin Heim

$\text{♩} = 108$



Schottisch aus Neumarkt

1. Trompete in B \flat

trad.
Bearb.: Alwin Heim



1. Tuba in C

Schottisch aus Neumarkt

trad.
Bearb.: Alwin Heim



A



B



C



D.S. + ABBC

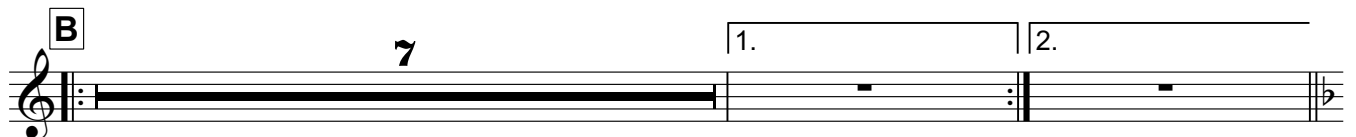


Schottisch aus Neumarkt

2. Alt-Saxophon in E \flat

trad.
Bearb.: Alwin Heim

$\text{♩} = 108$

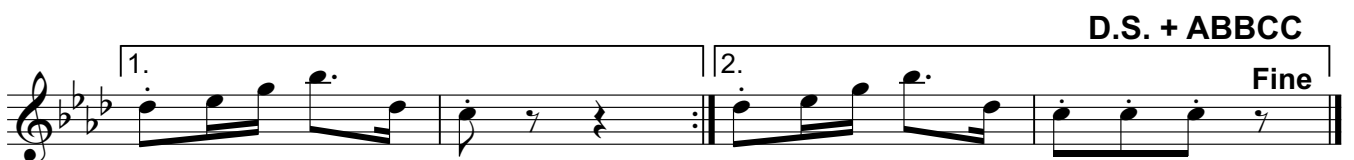
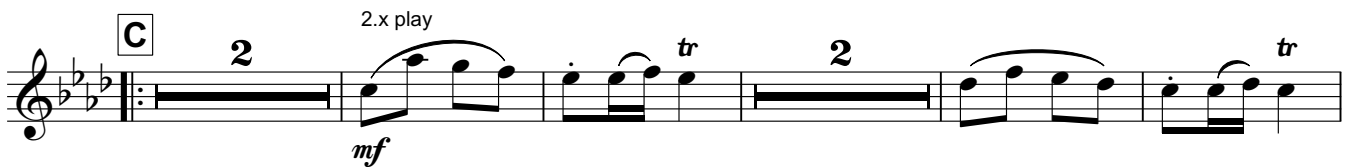


Schottisch aus Neumarkt

2. Flöte in C

trad.
Bearb.: Alwin Heim

♩ = 108

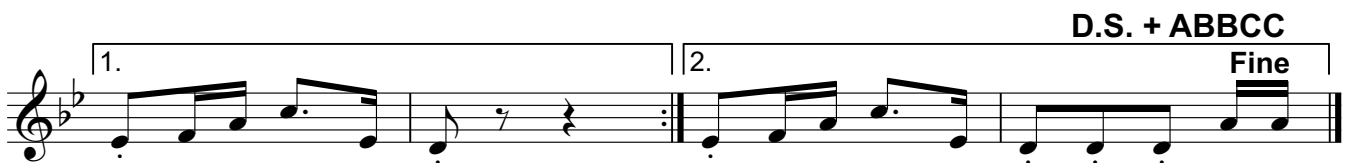
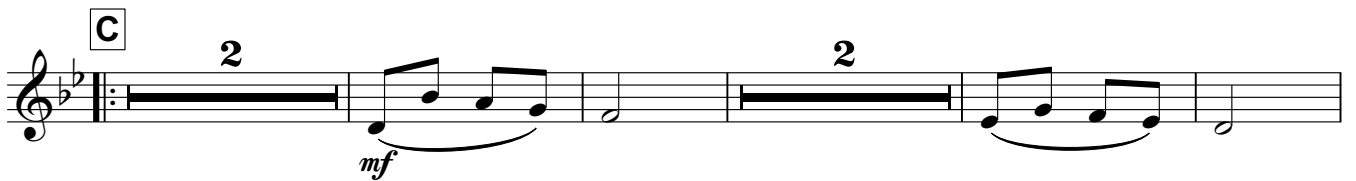
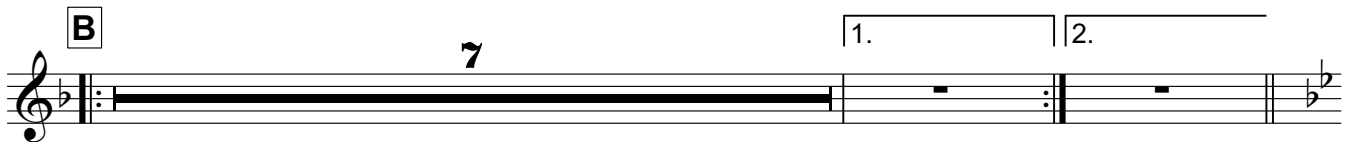


Schottisch aus Neumarkt

2. Flügelhorn in B \flat

trad.
Bearb.: Alwin Heim

$\text{♩} = 108$

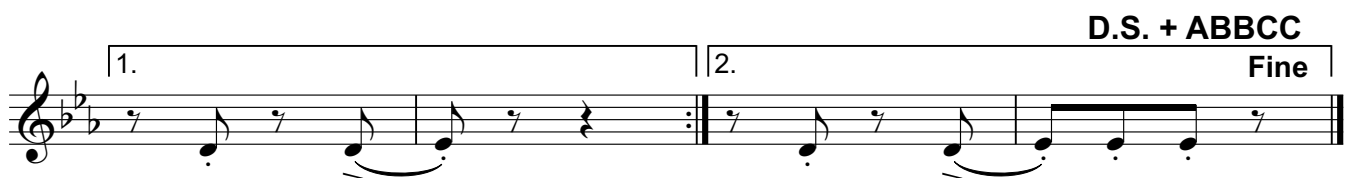
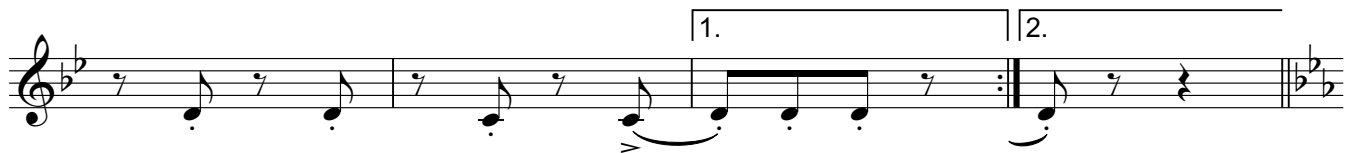


2. Horn in F

Schottisch aus Neumarkt

trad.
Bearb.: Alwin Heim

♩ = 108

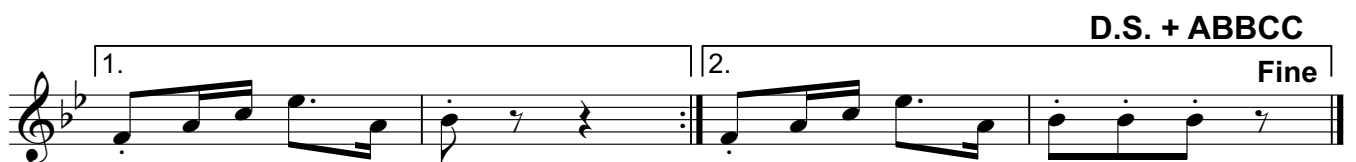
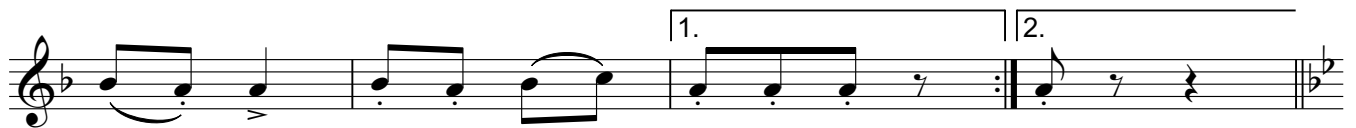


Schottisch aus Neumarkt

2. Klarinette in B \flat

trad.
Bearb.: Alwin Heim

$\text{♩} = 108$

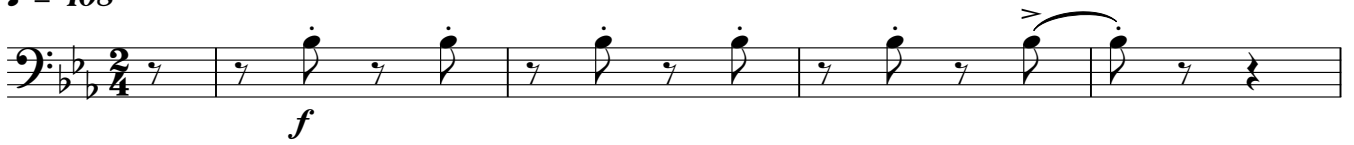


Schottisch aus Neumarkt

2. Posaune in C

trad.
Bearb.: Alwin Heim

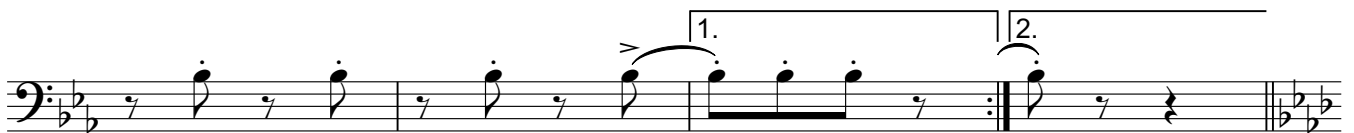
♩ = 108



A



B



C



D.S. + ABBC



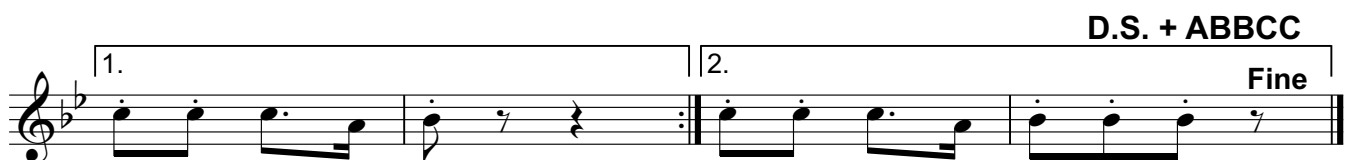
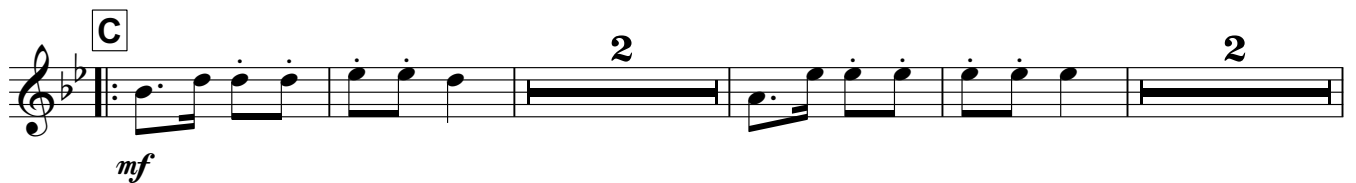
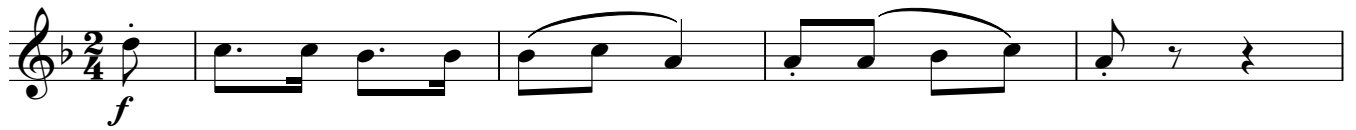
Fine

Schottisch aus Neumarkt

2. Tenor-Saxophon in B \flat

trad.
Bearb.: Alwin Heim

$\text{♩} = 108$

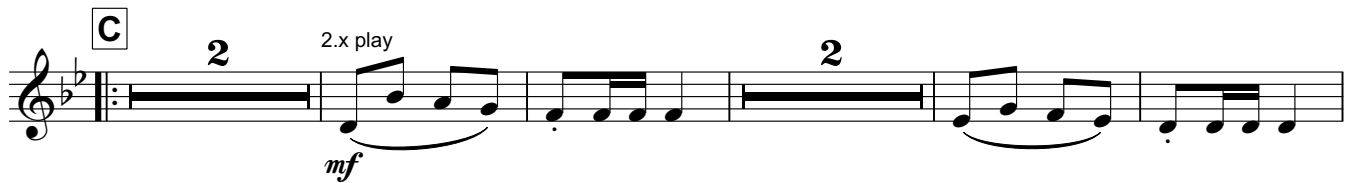
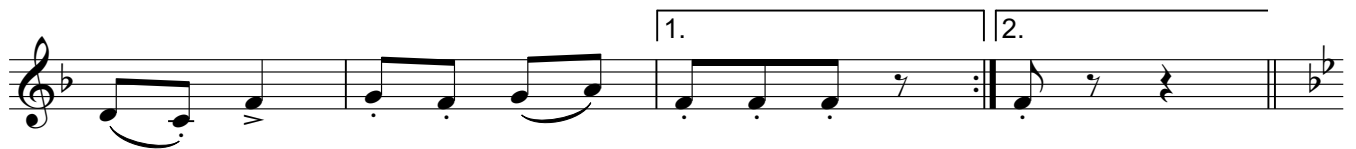


Schottisch aus Neumarkt

2. Trompete in B \flat

trad.
Bearb.: Alwin Heim

$\text{♩} = 108$



2. Tuba in C

Schottisch aus Neumarkt

trad.
Bearb.: Alwin Heim

♩ = 108

f

A

mf

1. 2.

B

f

1. 2.

C

mf

D.S. + ABBC

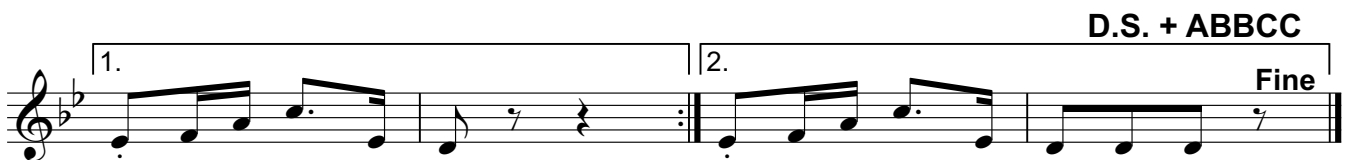
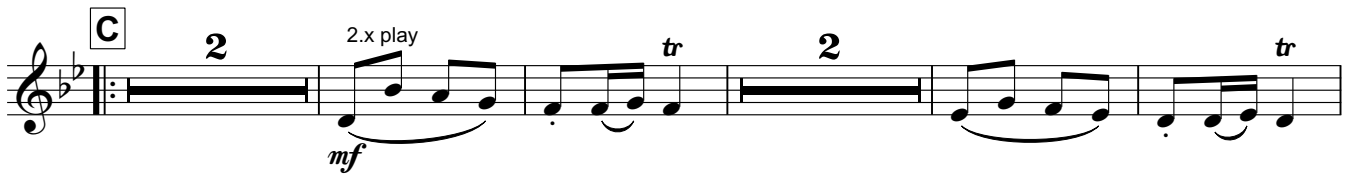
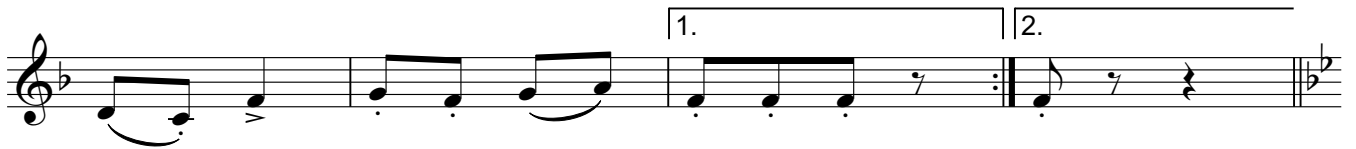
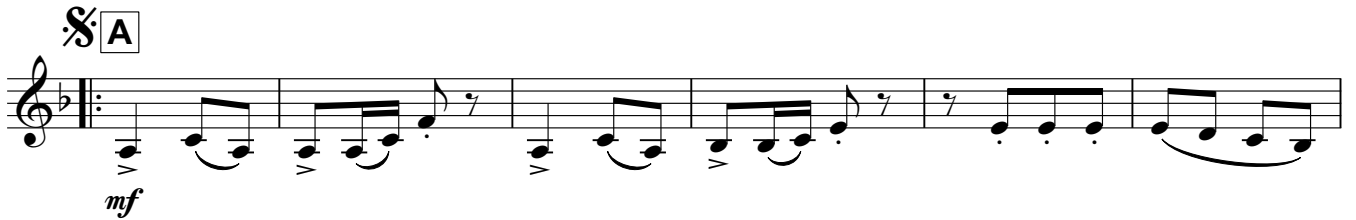
1. 2. **Fine**

Schottisch aus Neumarkt

3. Klarinette in B \flat

trad.
Bearb.: Alwin Heim

$\text{♩} = 108$



3. Posaune in C Schottisch aus Neumarkt

trad.
Bearb.: Alwin Heim

♩ = 108



A



B



C



D.S. + ABBC



Bariton in C

Schottisch aus Neumarkt

trad.
Bearb.: Alwin Heim

♩ = 108

f

A 2.x play
mf

B 2.x play
f

C
mf

D.S. + ABBC
Fine

Schottisch aus Neumarkt

Bariton-Saxophon in Eb

trad.
Bearb.: Alwin Heim

♩ = 108



Schottisch aus Neumarkt

Fagott in C

trad.
Bearb.: Alwin Heim

♩ = 108



A



B



C



D.S. + ABBC

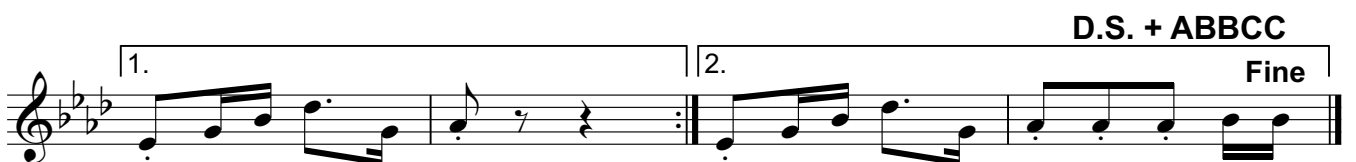
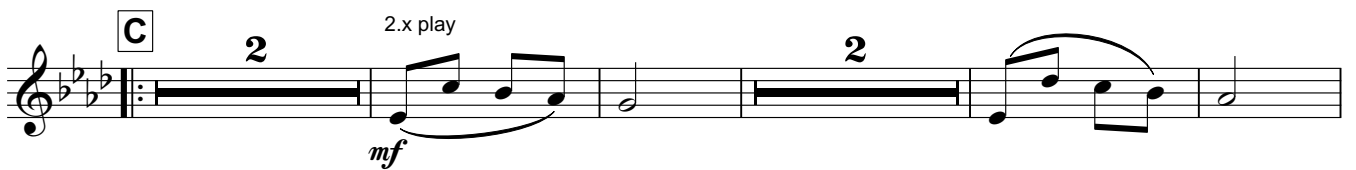
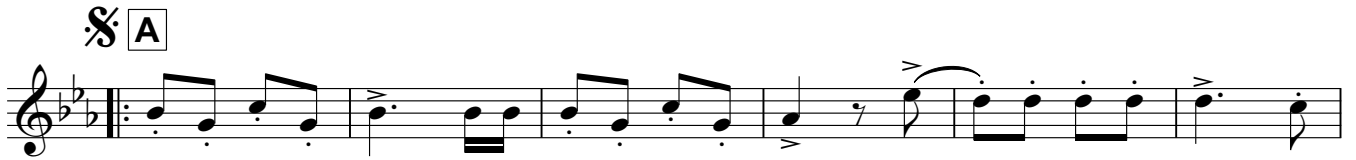


Schottisch aus Neumarkt

Oboe in C

trad.
Bearb.: Alwin Heim

♩ = 108



Schlagzeug

Schottisch aus Neumarkt

trad.
Bearb.: Alwin Heim

♩ = 108

f

A

mf

1. 2.

B

f

1. 2.

C 1x cymb. tacet

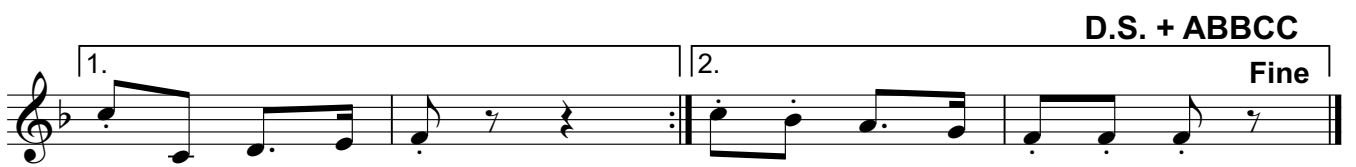
mf

D.S. + ABCC

1. 2. Fine

1. Tuba in Eb Schottisch aus Neumarkt

trad.
Bearb.: Alwin Heim



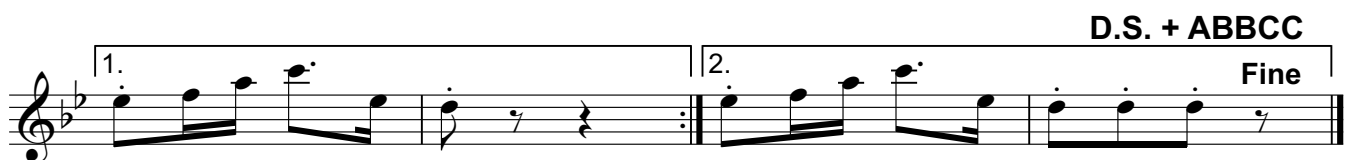
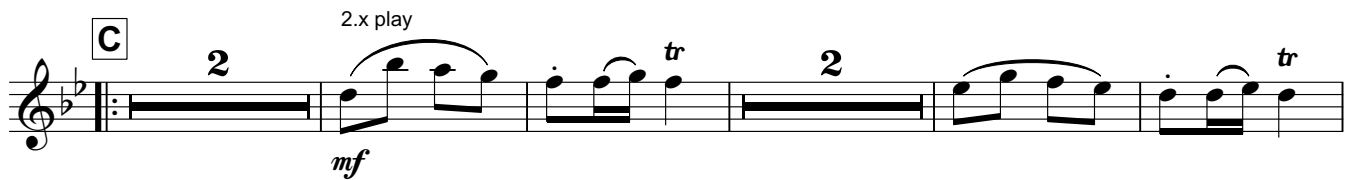
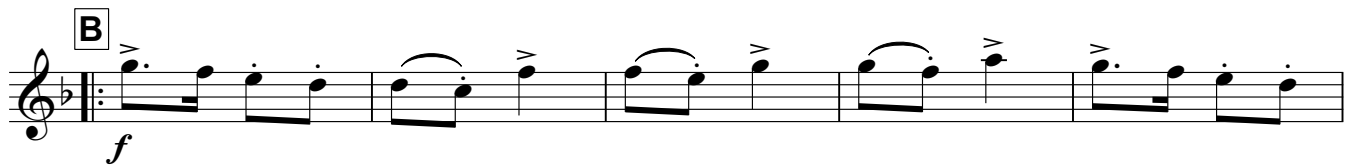
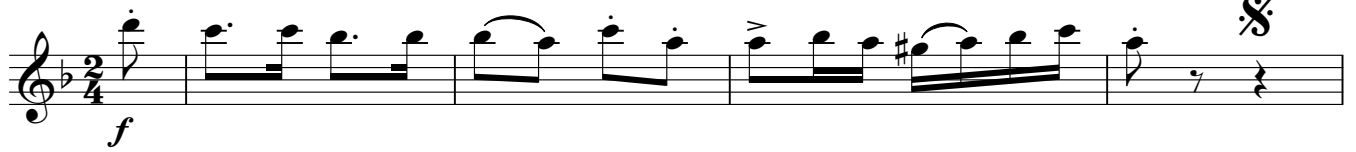
D.S. + ABBCC

Fine

Schottisch aus Neumarkt

1. Tuba in B \flat

trad.
Bearb.: Alwin Heim



Schottisch aus Neumarkt

1. Posaune in Bb

trad.
Bearb.: Alwin Heim

♩ = 108



Schottisch aus Neumarkt

2. Tuba in E♭

trad.
Bearb.: Alwin Heim

♩ = 108

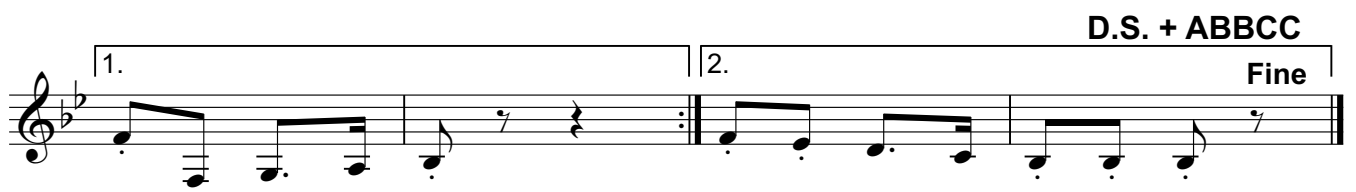


Schottisch aus Neumarkt

2. Tuba in B \flat

trad.
Bearb.: Alwin Heim

$\text{♩} = 108$



Schottisch aus Neumarkt

2. Posaune in Bb

trad.
Bearb.: Alwin Heim

$\text{♩} = 108$

f

A

mf

1. 2.

B

1.

2. **C**

mf

D.S. + ABBC

1. 2. **Fine**

Schottisch aus Neumarkt

3. Posaune in Bb

trad.
Bearb.: Alwin Heim

f

A

mf

1.

2.

B

f

1. 2. **C**

mf

D.S. + ABBCC

1. 2. Fine